

Rhode Island Learning Champions

March 21, 2017

Courtney Jacobs, Senior Associate, GSP
Erin Dukeshire, Senior Associate, GSP

TODAY'S PRESENTERS

Courtney Jacobs,
Senior Associate



TODAY'S PRESENTERS

Erin Dukeshire,
Senior Associate



HOUSEKEEPING

For technical support contact:
Great Schools Partnership

207-773-0505

HOUSEKEEPING

All phone lines will be **muted** throughout the presentation to reduce background noise.

HOUSEKEEPING

Feel free to ask questions **any time** or
make comments using the **chat space**

HOUSEKEEPING

This webinar is being **recorded**.

Find all materials on our website:

greatschoolspartnership.org/ri-champions/

HOUSEKEEPING

Please **type your name and school**,
into the chat space

e.g. **Erin Dukeshire, GSP**

Agenda

Webinar Outcomes

Introductions

Overview of the Rhode Island Learning Champions Initiative

Learning Champion Sessions: Outcomes and Logistics

Questions

Outcomes

Virtually introduce yourself to Learning Champions and facilitators.

Outcomes

Understand the goals of the Rhode Island Learning Champions.

Outcomes

Become familiar with outcomes of in-person sessions and webinars, as well as logistics related to the sessions.

INTRODUCTIONS

Introductions



RIDE Rhode Island
Department
of Education



GREAT
SCHOOLS
PARTNERSHIP



NEW ENGLAND
SECONDARY SCHOOL
CONSORTIUM

TODAY'S PRESENTERS

Courtney Jacobs,
Senior Associate



TODAY'S PRESENTERS

Erin Dukeshire,
Senior Associate





Is a non-profit support organization based in Portland working nationally with schools, districts and state agencies, providing coaching, and developing tools.

We Believe

In equitable, personalized, rigorous learning for **all students** leading to readiness for college, careers, and citizenship

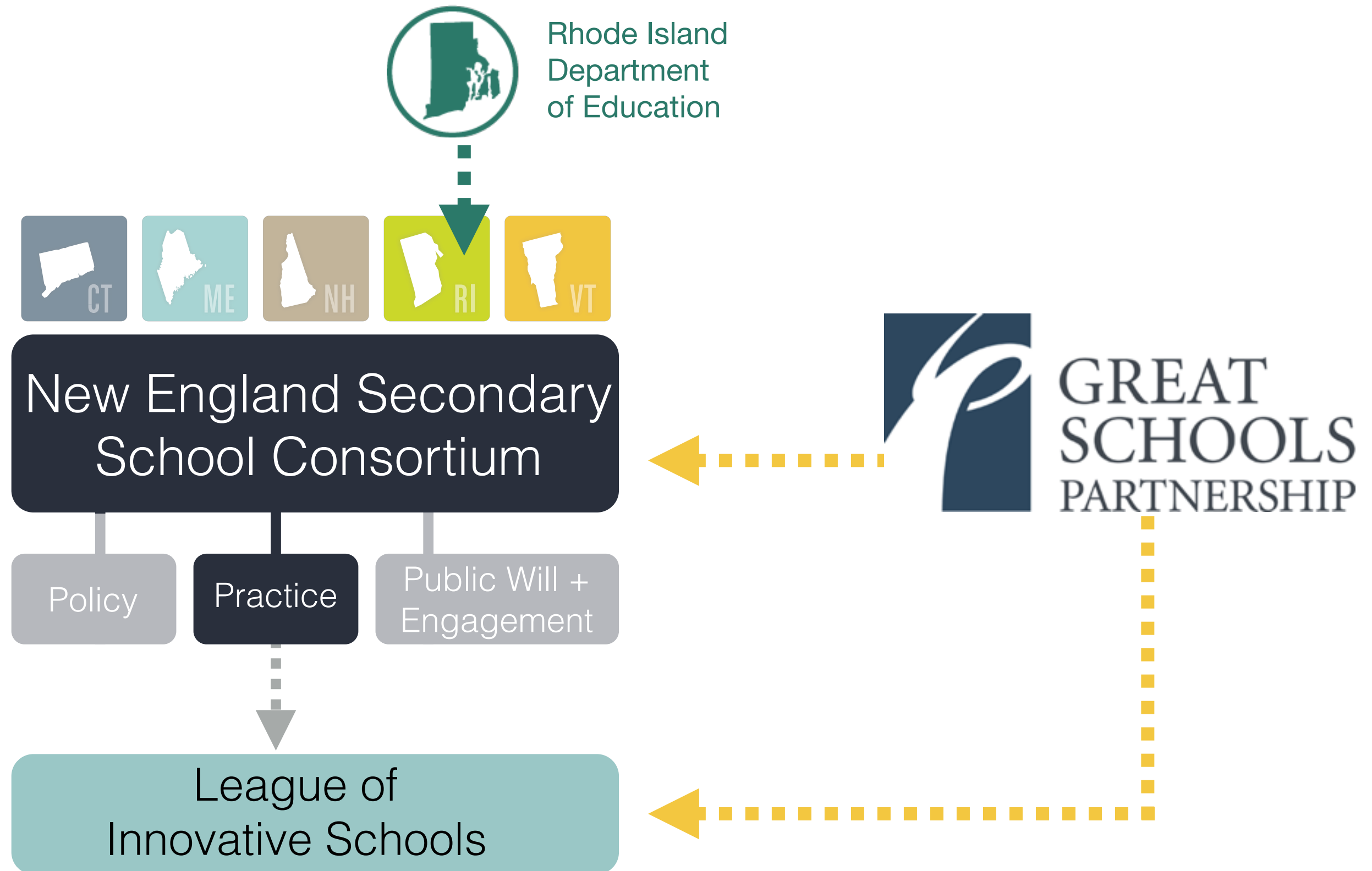
We Believe

That schools must simultaneously attend to
policy, practice, and community engagement

We Believe

School improvement is **context-based**,
not one-size fits all

Who We Are





**WHAT ARE THE GOALS OF THE
LEARNING CHAMPIONS?**

What is the vision
of a Rhode Island
graduate?



What Rhode Islanders Want for Students

A Rhode Island graduate is:

- is well prepared for postsecondary education, work, and life
- can think critically and collaboratively and can act as a creative, self-motivated, culturally competent learner and citizen

How Rhode Island Will Achieve This Vision

- Educators well-prepared to teach world class, rigorous standards that set forth high expectations for all students
- Quality instructional materials in schools
- * Student experiences in the classroom stand at the center of Rhode Island's vision

Graduation Proficiencies

What are the most foundational, enduring, and high-leverage concepts and skills within disciplines? Across disciplines?

Performance Indicators

What do students need to know and be able to do to demonstrate mastery of a graduation proficiency?

Scoring Criteria

How will we know when students are beginning, approaching, meeting, and exceeding proficiency?

How will students know?

How will families know?

Assessments

How do we craft assessments that provide evidence of student learning and progress toward proficiency?

How can we use assessment to empower students to demonstrate and take hold of their own learning?

GOALS

- Support a community of RI practitioner-learners to explore and support Proficiency-Based Learning in their classrooms, schools and/or districts
- Craft an exemplar set of proficiencies, performance indicators and scoring criteria for cross-curricular skills and content areas
- Design sample assessments aligned to proficiencies, performance indicators and scoring criteria



**WHAT ARE THE OUTCOMES
OF THE SESSIONS?**

Session Outcomes

Session 1: Introduction and Cross Curricular Performance Indicators

Session 2: Refine Cross Curricular Performance Indicators, Write Cross Curricular Scoring Criteria

Session 3: Refine Cross Curricular Scoring Criteria, Craft Content Area Proficiencies and Performance Indicators

Session 4: Refine Content Area Proficiencies and Performance Indicators, Craft Content Area Scoring Criteria

Session 5: Refine Content Area Scoring Criteria, Assessment Design

Session 6: Assessment Design

Webinars: Used to refine work and extend learning

Feedback Process

- After Learning Champions draft exemplars, you will receive feedback to review and consider at the next session.
- Learning Champions will be invited to provide feedback to facilitators after each webinar and in-person session.



**WHAT LOGISTICAL INFORMATION
DO I NEED TO KNOW?**

Logistics

Rhodes on the Pawtuxet

60 Rhodes Place

Cranston, RI 02905

(401) 785-4333



Logistics

In-Person Sessions

8:30 a.m. - 2:30 p.m.

- **Session #1:** April 4
- **Session #2:** May 9
- **Sessions #3-4:** August 8-9
- **Session #5:** Fall, T.B.D.
- **Session #6:** Fall, T.B.D.

Webinars

3:00 - 4:00 p.m.

- **Webinar #1:** March 21
- **Webinar #2:** May 2
- **Webinar #3:** May 23
- **Webinars #4-6:** T.B.D.

Logistics

- Please bring a **device** to access materials stored online.
- Breakfast and lunch will be provided.
- The 1st floor is handicap accessible. Let us know if you prefer to be in an accessible space on the first floor, rather than going to a break-out room on the 2nd floor. Also, let us know about any other accessibility needs you have.
- **RIDE will be providing stipends** through your district. Please note that the income is taxable.
- Districts will be reimbursed for **substitutes**. Please check with your school/district with any questions about substitute coverage.

Contact Information

Stipends & Substitutes

Kate Schulz | Instruction Improvement Specialist | RIDE
kate.schulz@greatschoolspartnership.org | 401-222-8489

Session & Webinar Content

Courtney Jacobs | Senior Associate | Great Schools Partnership
cjacobs@greatschoolspartnership.org | 207-553-0163

Erin Dukeshire | Senior Associate | Great Schools Partnership
edukeshire@greatschoolspartnership.org | 207-210-0567

Logistics: Webinars, Events, Registration, Document Access

Sarah Burkhardt | Office Associate | Great Schools Partnership
sburkhardt@greatschoolspartnership.org | 207-7733-0505

QUESTIONS & FEEDBACK

Feel free to **ask questions** by typing them into the chat box.

Provide feedback on this webinar and about timing of future webinars at this link:

<https://fs19.formsite.com/GSP1/form215/index.html>

THANK YOU!

